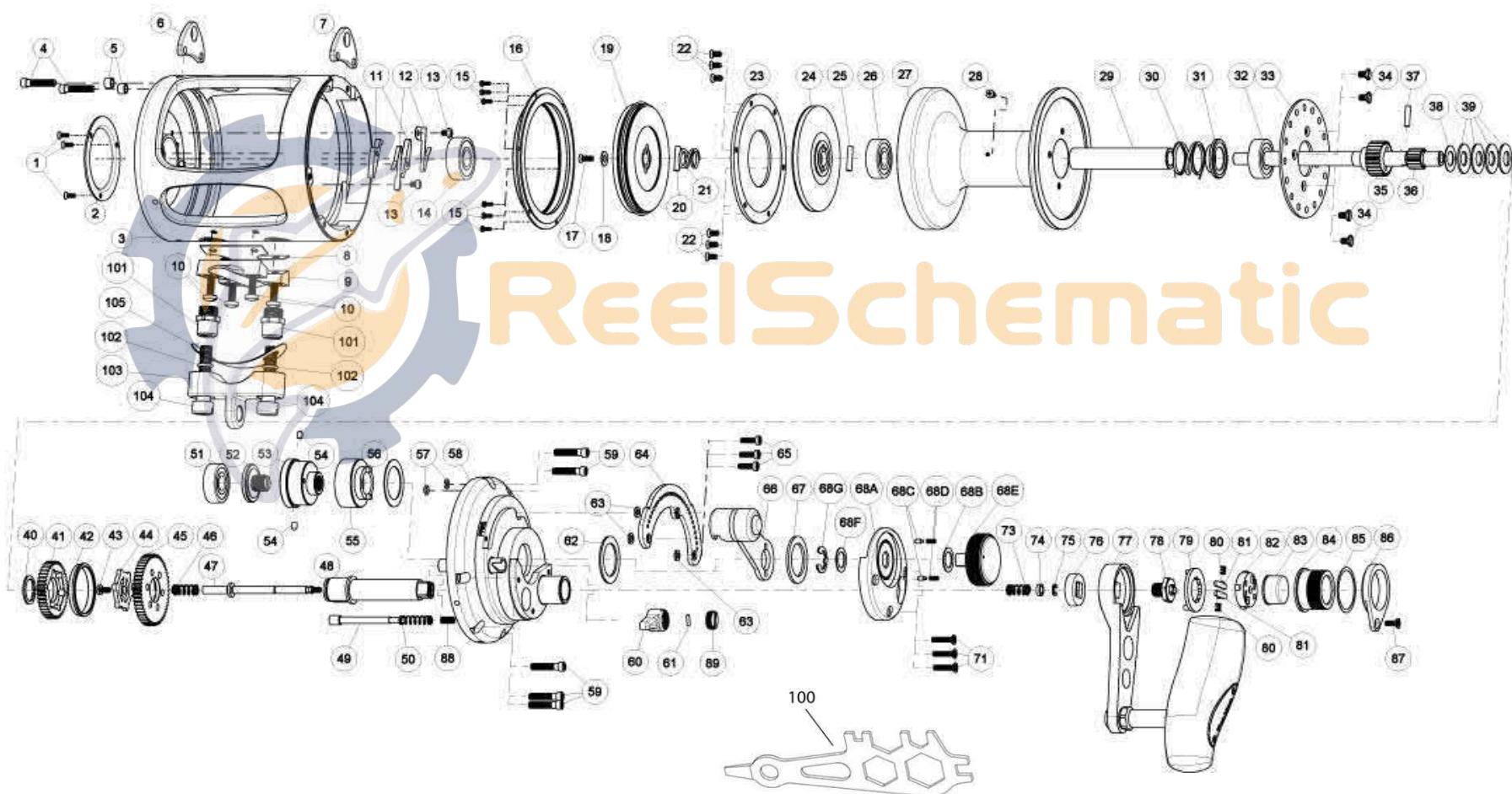


# FIN-NOR®

LEGENDARY TACKLE SINCE 1933

## Santiago30



# FIN-NOR®

LEGENDARY TACKLE SINCE 1933

## Santiago 30

### Fin\_Nor Santiago Trolling Reels - 30

Key No.	Description			Key No.	Description		
		30				30	
1	Cosmetic Cover Screw	HX107-03		51	Ball Bearing		LF017-01
2	Cosmetic Cover	LF145-01		52	Preset Screw		LF019-01
3	Frame Assembly	MF301-01		53	Cam Follower		LF153-01
4	Harness Lug Screw	LF053-01		54	Cam Pin		LF093-01
5	Harness Lug Screw Collar	LF094-01		55	Cam		LF028-01
6	Harness Lug	LF151-02		56	Washer		LF035-03
7	Harness Lug	LF151-01		57	O-Ring		MF101-01
8	Reel Foot Gasket	LF155-01		58	Gear Side Cover Assembly		LF324-01
9	Reel Foot	LF106-01		59	Side Cover Screw		LF053-01
10	Reel Foot Screw	LF125-01		60	Bait Click Lever		VF109-01
11	Anti Reverse Pawl	LF063-01		61	Bait Click Pawl Pin		WF100-01
12	Anti Reverse Pawl Spring	LF052-01		62	Drag Lever Washer		LF035-01
13	Anti Reverse Pawl Screw	LF050-01		63	Quadrant Spacer		MF094-01
14	Ball Bearing	MF017-01		64	Quadrant		LF152-01
15	Spool Cover Screw	LF057-01		65	Quadrant Screw		LF123-01
16	Spool Cover	LF051-01		66	Drag Lever Assy		LF355-01
17	Spool Shaft Screw	LF107-02		67	Washer		LF035-02
18	Spool Shaft Washer	MF038-01		68	Front Housing Cover Kit include		LF499-01
19	Drag Plate Assembly -"B"	LF348-01			68A - Front Housing Cover		LF099-01
20	Drag Plate Pin	LF100-01			68B - Washer		LF038-01
21	Drag Compression Spring	LF040-01			68C - Pre Set Knob Click Pawl		PW098-01
22	Drag Washer Screw	LF107-01			68D - Pre Set Knob Click Spring		YW114-01
23	Drag Washer	LF045-01			68E - Preset Knob		LF029-01
24	Drag Plate Assembly -"A"	MF348-01			68F - Washer		LF038-01
25	Drag Plate Pin	LF100-01			68G - E-Clip		LF092-01
26	Ball Bearing	LF017-01	71		Front Housing Cover Screw		MF050-01
27	Spool	MF021-01	73		Link Spring		LF070-01
28	Line Ting Screw	NF125-01	74		Link Spring Holder		MF081-01
29	Bearing Spacer	MF160-02	75		E-Clip		QW120-01
30	Pressure Release Spring	MF040-01	76		Handle Collar		LF081-01
31	Pressure Release Spring Holder	LF041-01	77		Handle Assembly		LF318-01
32	Ball Bearing	LF017-01	78		Handle Nut		MF003-01
33	Bait Click Plate	LF113-01	79		Handle Nut Retainer		LF034-01
34	Bait Click Plate Screw	MF107-01	80		Shift Spring		MF070-01
35	Low Speed Pinion Gear	LF011-01	81		Shift Holder		LF104-01
36	Spool Shaft	MF015-01	82		Shift Spring Holder		MF159-01
37	Pinion Gear Pin	MF093-01	83		Shift Button		MF062-01
38	Drag Adjusting Washer	LF032-00	84		Shift Knob		LF158-01
39	Drag Disc Spring	LF046-01	85		Washer		MF035-01
40	Retaining Ring	LF075-01	86		Shift Knob Holder		LF159-01
41	Low Speed Drive Gear	MF012-01	87		Shift Knob Holder Screw		MF076-01
42	Gear Spacer	LF160-01	88		Bait Click Lever Spring		JF071-01
43	Link Retainer Screw	MF053-01	89		Bait Click Lever Cap		VF115-01
44	Link	LF036-01	100		Wrench		DA113-01
45	High Speed Drive Gear	LF012-01	101		Rod Clamp Nut		LF003-01
46	Link Spring	LF070-01	102		O-Ring		LF101-01
47	Link Shaft	LF146-01	103		Rod Clamp		LF154-01
48	Crank Shaft	LF008-01	104		Rod Clamp Bolt		MF125-01
49	Bait Click Pawl	LF114-01	105		Rod Clamp Pad		MF155-01
50	Bait Click Spring	LF110-01					